

Courtyard

Justification

Justified— the work of a moment.

The perfect character (righteousness of Jesus) is (imputed) put upon us. It is a free gift. All the past sins are forgiven—seen in the brazen altar. We are brought back (reconciled) to the Father.

Sanctified—a moment by moment process begins. The cleansing righteousness of Jesus takes place—the laver.

Our title for heaven.

*Reconciled by His death
for my sin,
Justified by His life, pure,
and clean.*
(F.E. Belden)

Rom. 3:20, 24; 5:9, 16, 18;
8:30

Holy Place

Sanctification

Sanctified—moment by moment work—that of a lifetime.

The perfect character (righteousness) of Jesus is (imparted) becoming part of us every day. This is the experience of being freed moment by moment from the power of sin—seen in the daily prayers at the golden altar, and the daily service at the golden candlestick.

Our fitness for heaven.

*Sanctified by obeying His
Word.*
(F.E. Belden)

Jn. 17:17; 1 Thess. 5:23;
Phil. 2:12, 13; 2 Pet. 1:1-11;
3:18; Jas. 2:14-26

Most Holy Place

Glorification

Glorified—the work of an instant.

The complete perfect character of Jesus (mind and body) is (imputed) put upon us at His second coming. Yet we can experience a measure of glorification (Jesus in us) now, by entering into the Most Holy Place with Him where He has been since 1844. We enter into that place by faith. (See Vol. 5, "The Day of Atonement, pp 205-207.")

Glorification by remaining true and faithful to the end.

The audience chamber of God.

*Glorified when returneth
my Lord.*
(F.E. Belden)

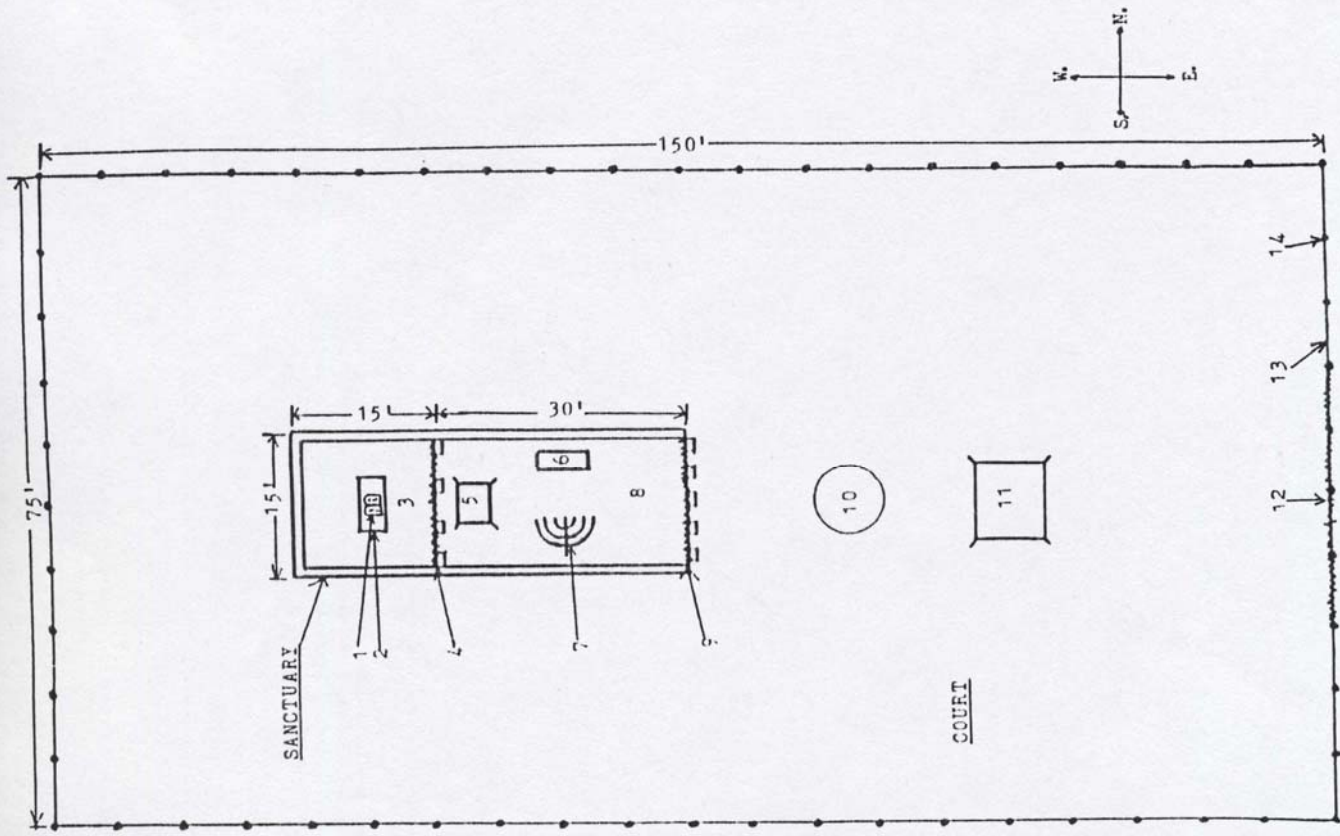
Mat. 25:34; Jn. 17:5, 22;
Rom. 8:30; 1 Cor. 15:51-54;
Col. 1:27

Justification (complete forgiveness), sanctification (continuous victory over sin through obedience), and glorification (the complete character and image of Jesus Christ)—these are the three steps from the altar of sacrifice to the throne of God. At the altar He calls, "Come unto Me." From the throne He calls, "Come ye blessed of My Father, inherit the Kingdom prepared for you from the foundation of the world." Mat. 25:34

JAMES OF THE SYMBOLS OF THE SANCTUARY (SEE DIAGRAM)

- 1. Ten Commandments--Tables of Stone
- 2. Ark
- 3. Most Holy Compartment
- 4. Veil--separates the Most Holy from the Holy compartment
- 5. Altar of Incense (Golden)
- 6. Table of Shewbread
- 7. Candelabra--Seven candles
- 8. Holy compartment
- 9. Veil--Door of the Sanctuary
- 10. Brazen Laver
- 11. Brazen Altar of Sacrifice
- 12. Gate--to Court--30 ft. long
- 13. Court Wall--white linen 7 1/2 ft. high
- 14. Brass Pillars--silver capitals and brass bases (60)

The Temple was always set up with the Gate facing East.



SYMBOLS

PARTIAL DEFINITIONS

REFERENCES

GOLD=====FAITH & LOVE

2T pp. 36-7; PK p. 410

DEFINITION

LAMB=====JESUS

John 1:29, 1:36; Rev. 5:12-13, 7:14, 12:11

TABLE OF SHEWBREAD=====DEPENDENCE PERPETUAL OFFERING

PP p. 354, Christ-Jn. 6:31 -33, 35, 41, 48-58

BLOOD=====LIFE

Gen. 9:4; Lev. 17:11; Rom. 5:9-Justified by; Rev. 12:11-Overcome by; Rev. 7:14-Cleansed by Heb. 9:22-Purged

BREAD=====CHRIST

Heb. 9:2; Mark 2:26; Matt. 12:4; Luke 6:4; PP p. 354; Word- Luke 4:4

PRIEST=====SAINTS

Rev. 1:6, 5:10; 1 Pet. 2:9; DA p. 165

WINE=====DOCTRINE NEW TESTAMENT

GC p.388; DA p.661; 1 Cor. 11:25

HIGH PRIEST=====JESUS

Heb. 8:1-2

GOLDEN ALTAR OF INCENSE=====INTERCESSION

PP p. 353

COURT=====EARTH

6T p. 366-7

INCENSE=====RIGHTEOUSNESS

PP p. 353; Prayers-Rev. 5:8; Luke 1:10

WHITE=====RIGHTEOUSNESS

Rev. 7:14, 19:8; Dan. 12:10; 4T p. 88

SILVER=====OBEDIENCE TO COMMANDMENTS

PK p. 410; Good works 5T 466

CANDELABRA=====SEVEN CHURCHES

Rev. 1:20

BRAZEN ALTAR OF SACRIFICE=====CALVARY

PP P. 352, 367; Also a daily consecration to God

LIGHT=====JESUS

John 8:12; 1:4,5,7

BRASS=====EARTH

Lev. 26:19; Revolters & corrupters-Jer.6:28; Strength-Duet. 33:25; Heb. definition "Learned by experience."

VEIL IN TEMPLE=====CHRIST'S FLESH

Heb. 10:19-20

FIRE=====GOD

Matt. 3:11; Mal. 3:2; Ps. 18:8; Deut. 4:24; Heb. 12:29

ARK=====GOD'S PRESENCE

PP p. 706

BRAZEN LAVER=====CLEANLINESS REGENERATION

2T p. 611-12; Titus 3:5; Eph 5:26; DA p. 51

TEN COMMANDMENTS=====LOVE

1 John 5:2,3; Rom. 7:12; God's character-Love- GC p. 434

WATER=====GRACE

PP p. 412; People- Rev. 17:15; Cleansing -Eph. 5:26

MERCY SEAT=====MEETING PLACE

PP p. 349-Where mercy and truth meet

EARTHLY TEMPLE=====HEAVENLY TEMPLE

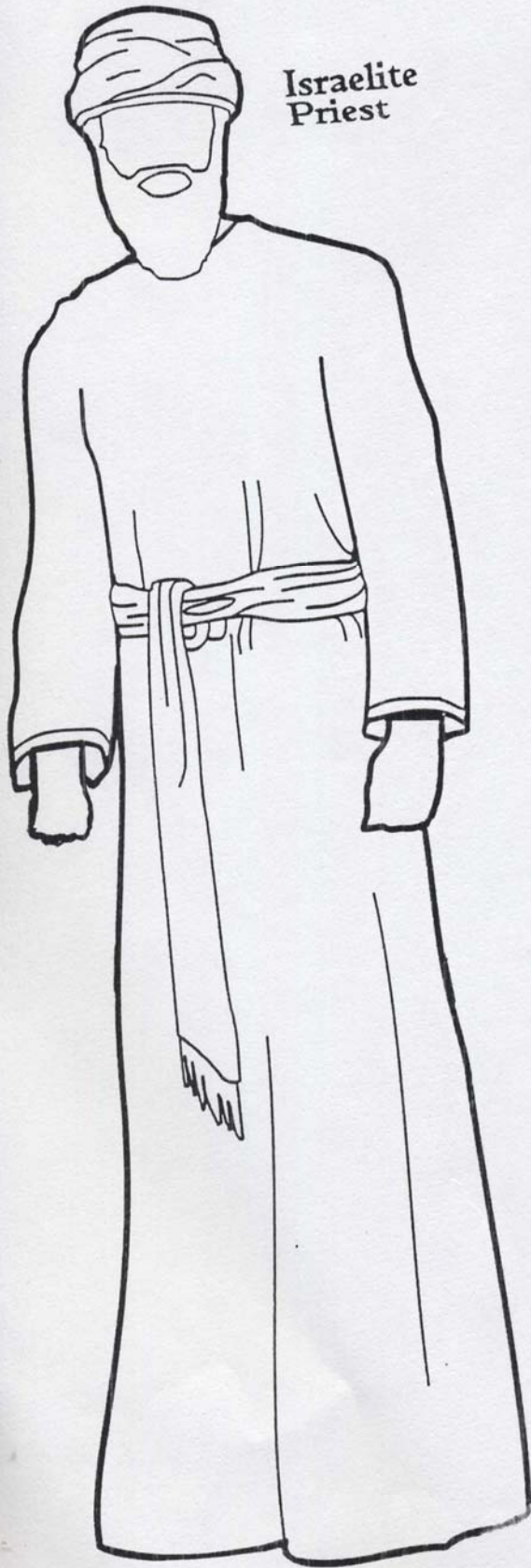
Ex. 25:1,8-9; Heb. 8:1-2,5; Rev. 11:19

SHEKINAH=====GOD'S PRESENCE

EW p. 32

THE SOLEMN SERVICE OF SACRIFICE AND WORSHIP AT THE SANCTUARY AND THE UTTERANCES OF THE PROPHETS WERE A REVELATION OF GOD; PP p. 592

Israelite Priest



PRIESTS OF YAHWEH

All the priests of Yahweh wore the same uniform, one that Yahweh dictated through Moses. All the regular priests wore a plain, white, linen robe and turban. In addition to this robe the High Priest wore a special suit, also at Yahweh's direction. The suit was white and blue, trimmed with bells and pomegranates, and had a jeweled breastplate. With his turban he also wore an engraved golden headband.

Coloring Guide

Turban: White with a gold headband.

Basic linen robe: White

Next a short sleeved tunic: Blue

Ephod (shorter sleeveless robe), sash, and breastplate: Woven of gold, blue, purple, scarlet, and white

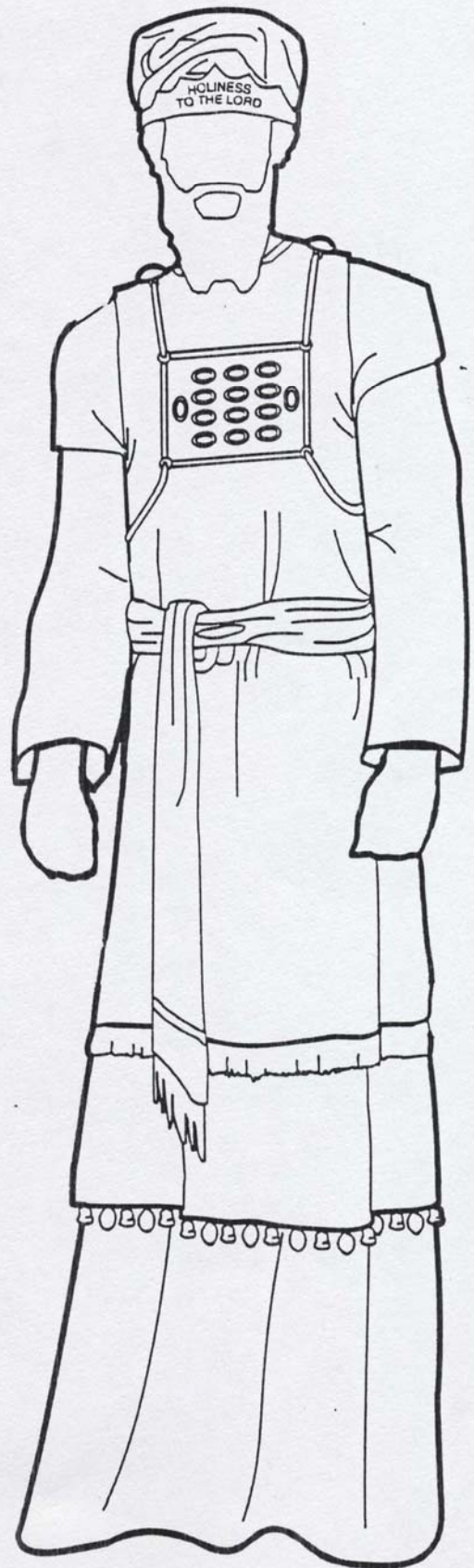
Breastplate rings and chains: Gold

Breastplate jewels: 14 different colors

Shoulder stones: Onyx

Bells: Gold

Pomegranates: Blue, purple, and scarlet



Appendix, continued

P. Events that are definitely located by the 2300 years (one day in prophetic time equals one year in real time):

Baptism of Jesus: 27 A.D.

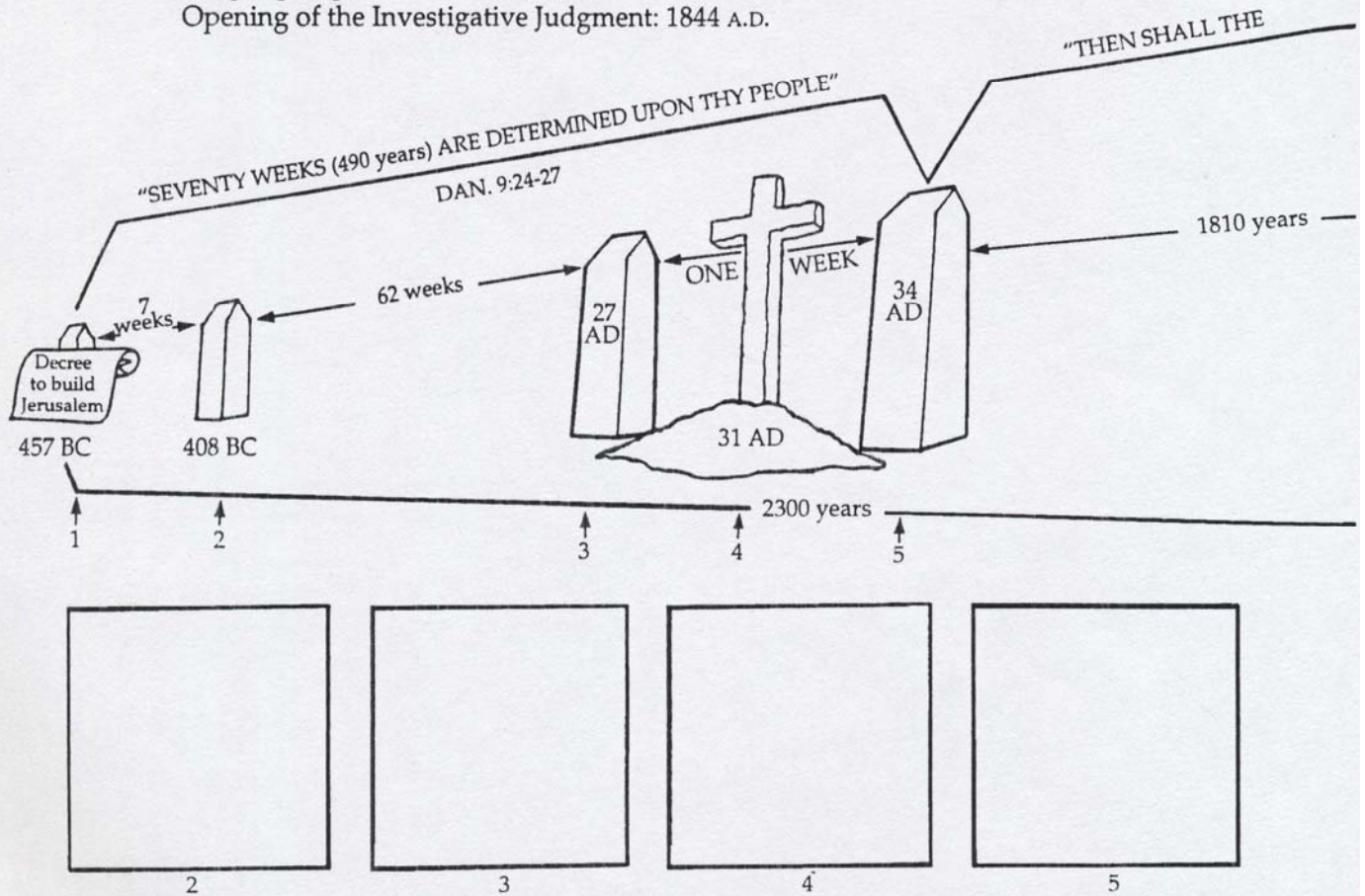
Death of Jesus Christ: 31 A.D.

(The crucifixion of Jesus during the midst of the 70th week "sealed the vision" and established the other dates.)

Anointing of the heavenly sanctuary: 31 A.D.

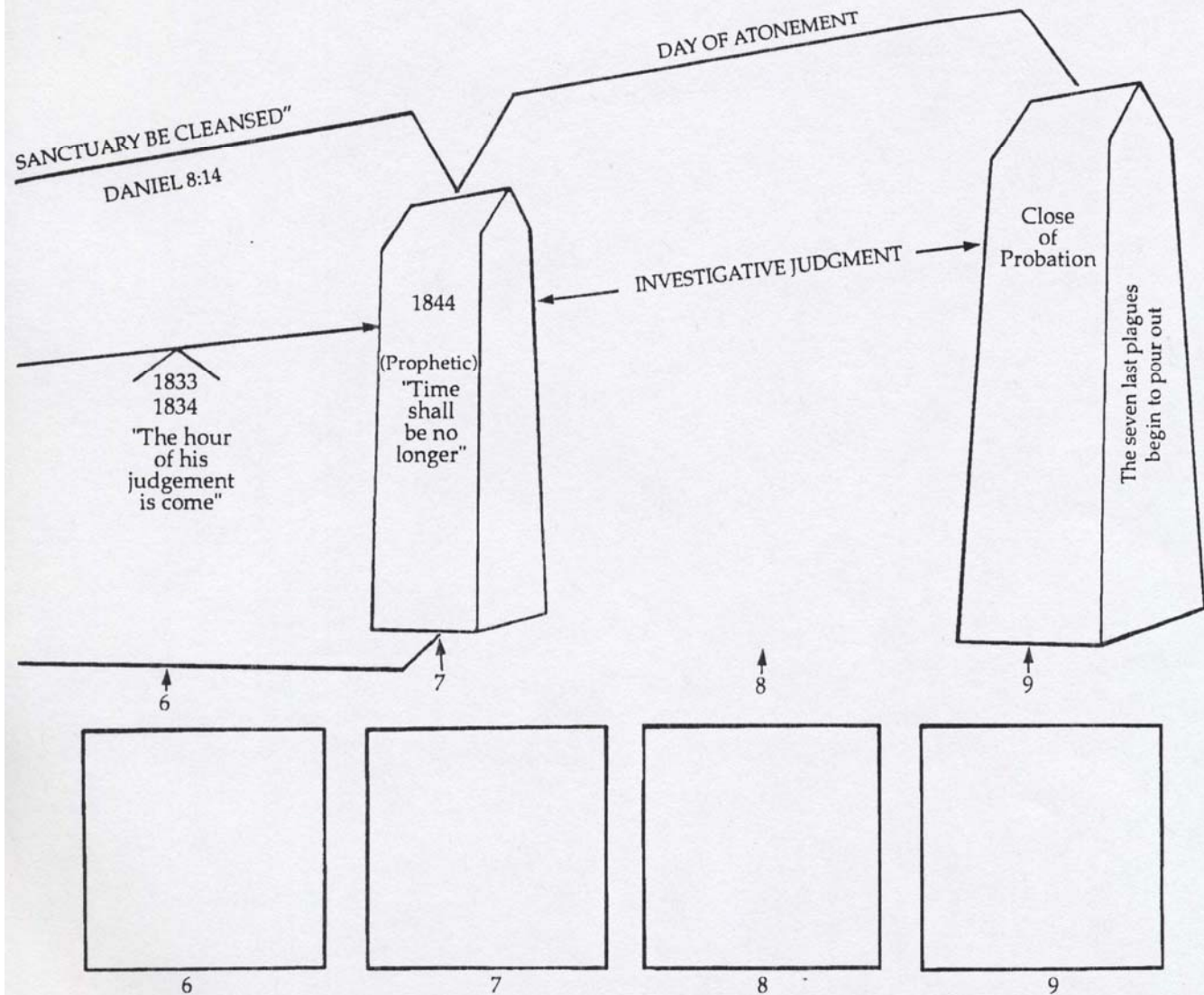
Gospel going to the Gentiles: 34 A.D.

Opening of the Investigative Judgment: 1844 A.D.



Put a little drawing or picture in the boxes to illustrate the event that happened with each important date.

1. Order given to restore and build Jerusalem (no drawing necessary) Ezra 6:14; 7:11-21
2. The wall of Jerusalem was completed. Dan. 9:25
3. Jesus was baptized. Dan. 9:25; Mark 1:10, 15 (see margin(s) in Oxford Bible for accuracy of dates); Luke 3:21; John 1:44; Acts 3:15; 5:31
4. Jesus was crucified. Dan. 9:26, 27
5. Stephen was stoned, so the Gospel went to the Gentiles. Dan. 9:27; Heb. 2:13; Acts 8:4
6. William Miller, Irving Edwards, Joseph Wolff and others preached the coming judgment (cleansing of the sanctuary). Rev. 14:7



7. Jesus Christ enters the Most Holy Place of the heavenly sanctuary to begin the investigative judgment. Dan. 8:14; Heb. 9:11, 12, 7
8. God's people seeking to be like Jesus through Bible study and prayer.
9. Jesus is done with the investigative judgment. He throws down the censer and leaves the Most Holy Place to go into the holy. There He pauses long enough to place the confessed sins upon the head of Satan. Rev. 22:11, 12; 8:3-5; (See *The Sanctuary Series, Vol. 5, "The Day of Atonement,"* p. 210.)

Jesus ascended to heaven forty days after His resurrection. He told the disciples to wait in Jerusalem until they received the baptism of the Holy Spirit. It came ten days later, exactly on the day the Feast of Harvest was to be celebrated—Pentecost. Acts 1 and 2:1-4. During those ten days a special inauguration and anointing ceremony was going on in heaven for Christ. Dan. 9:24. At the end of those ten days, the heavenly sanctuary was anointed. This is when the disciples received the Holy Spirit. AA 38, 39.

PRIESTS OF YAHWEH

All the priests of Yahweh wore the same uniform, one that Yahweh dictated through Moses. All the regular priests wore a plain, white, linen robe and turban. In addition to this robe the High Priest wore a special suit, also at Yahweh's direction. The suit was white and blue; trimmed with bells and pomegranates, and had a jeweled breastplate. With his turban he also wore an engraved golden headband.

Coloring Guide

Turban: White with a gold headband.

Basic linen robe: White

Next a short sleeved tunic: Blue

Ephod (shorter sleeveless robe), sash, and breastplate: Woven of gold, blue, purple, scarlet, and white

Breastplate rings and chains: Gold

Breastplate jewels: 14 different colors

Shoulder stones: Onyx

Bells: Gold

Pomegranates: Blue, purple, and scarlet

